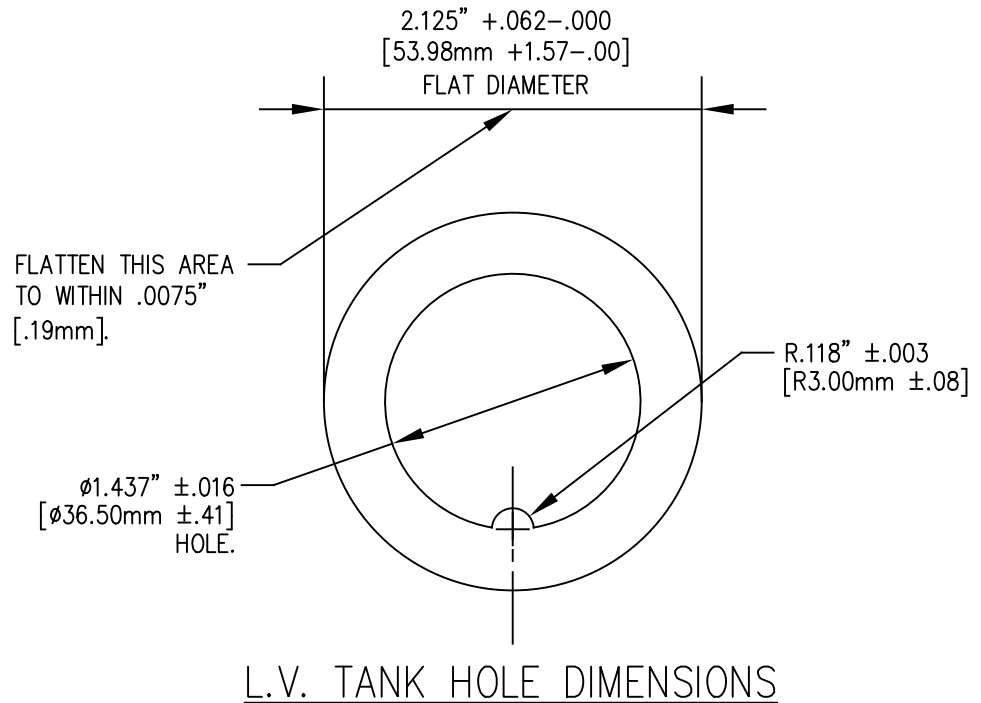


REVISIONS					
NO.	DATE	ECN #	REMARKS	BY	APPD.
1	11-29-99		EDITED DIMENSIONS.	CJT	LHE
2	1-16-02	HJ01-231	REMOVE TORQUE NOTE.	CJT	LHE
3	12-8-18	HJ18-233	ADDED CURRENT AND BIL RATING NOTES	TJF	CJT
4	06-08-20	HJ20-151	RATED CURRENT WAS 208A	MAD	LO
5	7/21/2020	HJ20-188	REVISED TITLE BLOCK	MAD	LO



NOTES:
 1. INCLUDES (2) EXTRA BRASS HEX NUTS
 2. INCLUDES (2) EXTRA BRASS WASHERS

MATERIAL:
 STUD - COPPER CDA C11000
 BODY - CDA 84400 - TIN PLATED
 EYEBOLT - CDA 95500 - TIN PLATED

- △3 NOMINAL SYSTEM VOLTAGE: 1.2kV
BIL: 30kV
- △4 RATED CURRENT: 420 AMPS

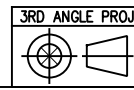
TOLERANCES (EXCEPT AS NOTED)
DECIMAL ±.032"/.8mm
FRACTIONAL ±



H-J ENTERPRISES, INC.
 3010 HIGH RIDGE BLVD. HIGH RIDGE, MO. 63049 USA
 PHONE 1-636-677-3421 FAX 1-636-376-1915

△5 NON-PORCELAIN BUSHING
 1.2kV, 30kV BIL, 420A

MATERIAL (SEE ABOVE)		DRAWING NO.	
CHK'D	APP'D	AS1002-028	
DRAWN BY BTD	DATE 2-19-97	SCALE N.T.S.	



ANGULAR
±2°